

CCK/e and CETM/ Vibration Test Chambers

- Horizontal and Vertical vibration mode
- Temperature range: -70°C to +180°C
- Volumes from 25 to up 4000 liters
- Humidity optional
- Adaptable for any kind of shakers
- Special designs
- CE mark



DYCOMETAL EQUIPOS DE C.C., S.L.

C/ De la Ciència, 35-37

08840 - Viladecans (Barcelona) - SPAIN

T: (34) 936 526 610 F: (34) 936 407 607

www.dycometal.com

FEATURES:

Construction

Las cámaras **CCK/e** y **CETM/e** vibration test chambers are manufactured in AISI-304 stainless steel, with high temperature fiberglass or ceramic wool insulation. No asbestos is used in chamber construction.

Built externally, based galvanized steel sheet with oven-dried acrylic paint to RAL-9010. Chamber doors with viewing window.

One special diaphragm interface is provided for use with shaker table.

Heated viewing window and interior light makes the visualization of the workspace free of problems.

All seams are continuously welded to form a hermetically sealed unit to prevent moisture migration.

Cooling

Refrigerants are environmentally safe, non-flammable, non-explosive and have a Zero Ozone Depletion Potential.

The airflow system includes air circulator motors that provide better airflow within the chamber.

High temperature change rates like an optional (until $15^{\circ}\text{C}/\text{min}$).

Humidity

The chamber has an electronic humidity sensor. It is used on all humidity models (CCK) for accuracy and minimal maintenance.

Temperature

The temperature is measured by a Pt-100 sensor.

Communications Port

RS-232 serial communications.



DYCOMETAL EQUIPOS DE C.C., S.L.

C/ De la Ciència, 35-37

08840 - Viladecans (Barcelona) - SPAIN

T: (34) 936 526 610 F: (34) 936 407 607

www.dycometal.com

CONTROL:

Controlador/ Programmer

CCK/e and CET/e are furnished with a Eurotherm programmable controller, which includes a LED display with alphanumeric keyboard

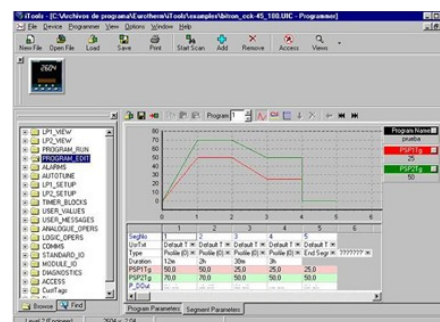
- Programs numbers stored in the memory: 50.
- 500 segments programs.
- Loops number: from 1 to 999 or infinite
- Optimization of work values by PID parameters in cold and heat.
- LED screen with alphanumeric keyboard that allows visualize the programmed values. The screen has an ergonomic position, switch and controls.
- Temperature and humidity monitoring which allows programming in sections based profiles using ramp and stabilization.
- The system allows you to save in nonvolatile memory all programmed data, not being affected by power failures.
- Setting alarms. Advise when exceeds a safety limit or for some reason there is any deviation from the programmed conditions.



Software

Software for monitoring, data logger programming, graphics, alarms and configuration of the instruments.

- Record and storage to file.
- Display of existing file.
- Creation and modification of the programs.
- Obtaining of Temperature and Humidity records in digital files with programming of the record interval.
- Record and storage in a file of Essay historical for real values as well as configured alarms.
- Essay Graphical Representation, X-Y type, that shows in the screen the set-point and the real values, as well as the configured alarms.
- Essay records available to be converted to ASCII format



DYCOMETAL EQUIPOS DE C.C., S.L.

C/ De la Ciència, 35-37

08840 - Viladecans (Barcelona) - SPAIN

T: (34) 936 526 610 F: (34) 936 407 607

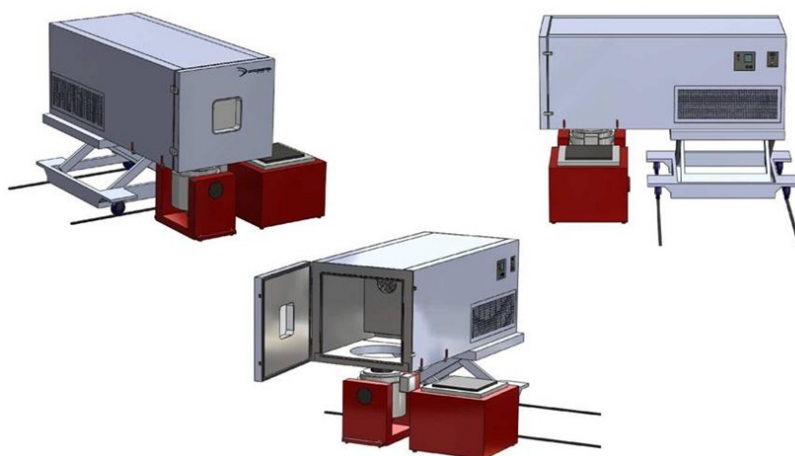
www.dycometal.com

TECHNICAL SPECIFICATIONS:

| Model | | CET-.../180e CCK-.../180e | CET-.../300e CCK-.../300e | CET-.../480e CCK-.../480e | CET-.../648e CCK-.../648e | CET-.../1000e CCK-.../1000e | CET-.../4000e CCK-.../4000e |
|-----------------------------------|---------------------|------------------------------|------------------------------|------------------------------|------------------------------|--------------------------------|--------------------------------|
| Volume | Liters | 180 | 300 | 480 | 648 | 1000 | 4000 |
| Workspace dimensions* | Height | mm | 600 | 700 | 800 | 900 | 1000 |
| | Width | mm | 600 | 700 | 800 | 900 | 1000 |
| | Depth | mm | 500 | 625 | 750 | 800 | 1000 |
| External dimensions | Height | mm | 1750 | 1900 | 2020 | 2100 | 2300 |
| | Width | mm | 900 | 1000 | 1100 | 1330 | 1290 |
| | Depth | mm | 1825 | 2000 | 2075 | 2175 | 3000 |
| Temperature Test | | | | | | | |
| Temperature range | CET-40.../CCK-40... | °C | -40 to 150 | -40 to 150 | -40 to 150 | -40 to 150 | -40 to 150 |
| | CET-70.../CCK-70... | °C | -70 to 150 | -70 to 150 | -70 to 150 | -70 to 150 | -70 to 150 |
| Temperature change rate cooling** | °C/min | 3 to 5°C/min | | | | | |
| Temperature change rate heating** | °C/min | 3 to 5°C/min | | | | | |
| Temperature homogeneity | °C | ±1 | | | | | |
| Temperature accuracy | °C | ±0,1 | | | | | |
| Climatic Test | | | | | | | |
| Temperature range | °C | +10 to +90 | | | | | |
| Humidity range | % R.H. | 15 to 98% | | | | | |
| Humidity homogeneity | % R.H. | ±2 | | | | | |
| Humidity accuracy | % R.H. | ±0,1 | | | | | |
| Nominal Voltage | | 400V (+6%-10%) 3N 50Hz | | | | | |
| Refrigeration Unit | | Air cooled | | | | | |
| Level noise | dB | <60 | | | | | |

*Other sizes on request

** Temperature change rate according with IEC 60068-3-5. Higher gradients (>5°C/min) under request



DYCOMETAL EQUIPOS DE C.C., S.L.

C/ De la Ciència, 35-37

08840 - Viladecans (Barcelona) - SPAIN

T: (34) 936 526 610 F: (34) 936 407 607

www.dycometal.com